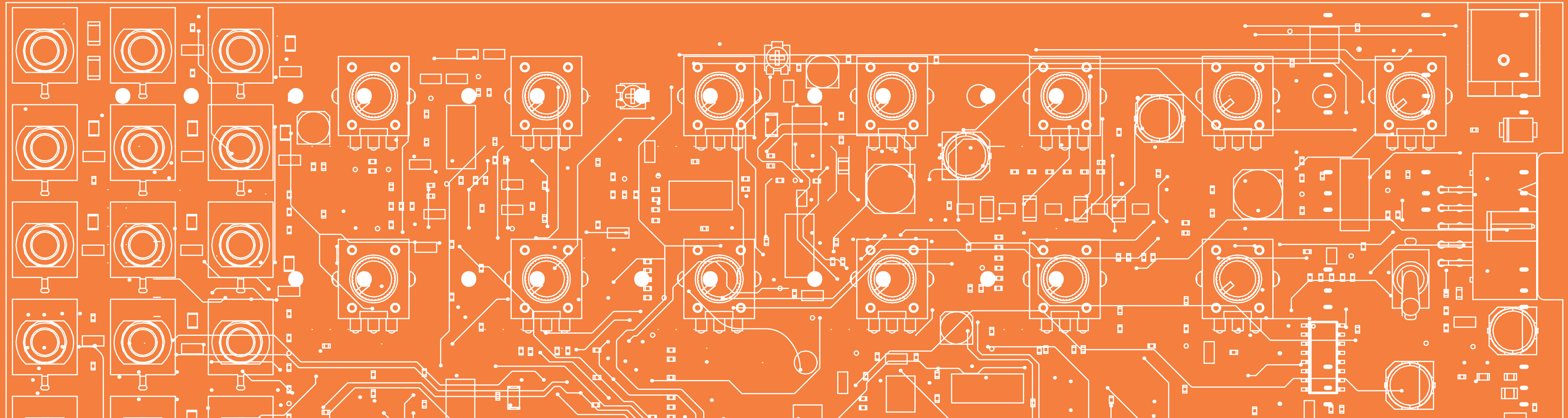


Mavis + Mother-32

Exploration Patchbook



How to Sequence Mother-32 + Mavis

MOTHER-32 | SEMI-MODULAR ANALOG SYNTHESIZER

MAVIS | MONOPHONIC ANALOG SYNTHESIZER VOICE

NOTES:

Set Mother-32 **ASSIGN** output to Function 2 (clock). Press **RUN/STOP**.

As sequence plays both Mother-32 and Mavis, adjust Mother-32 **FREQUENCY** and Mavis **PITCH** so that they play in tune together.

Folded Kick

MOTHER-32 | SEMI-MODULAR ANALOG SYNTHESIZER

meog

MAVIS | MONOPHONIC ANALOG SYNTHESIZER VOICE

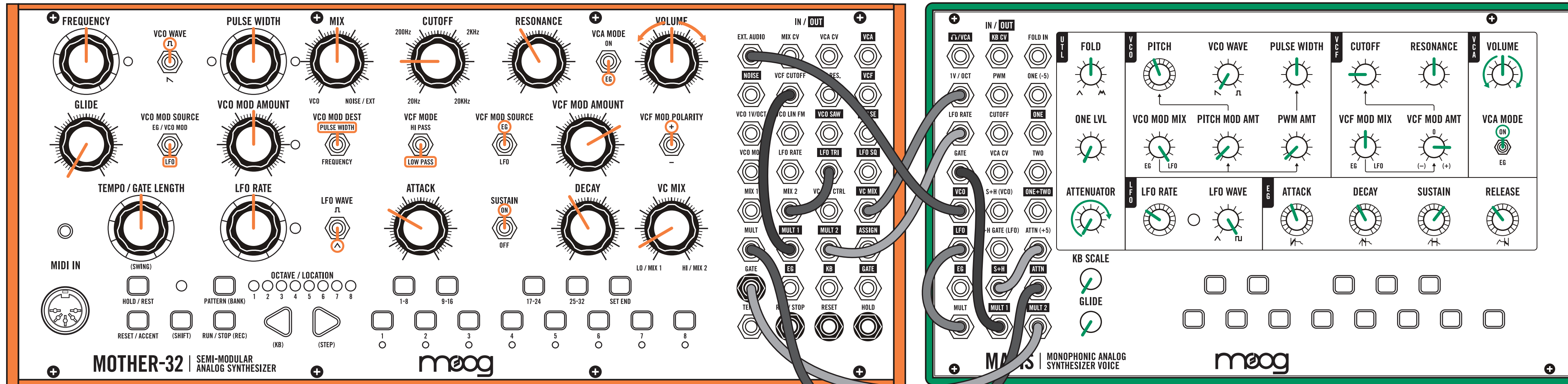
meog

NOTES:

Enter a bass line sequence on Mother-32. Configure **ASSIGN OUT** for **SEQUENCE CLOCK/4** (quarter-time).

Play with **FOLD** knob to explore folded kick drums. Raise **ONE LVL** knob to randomly modulate folding amount.

Intermittent Blasting



NOTES:

Tune Mother and Mavis VCOs in unison or any other interval you prefer. No need for a sequence here!

Increase Mavis ATTENUATOR knob setting for deeper S+H modulation and Mother-32 VC MIX for wilder pitch swings.

Bifolder

MOTHER-32 | SEMI-MODULAR ANALOG SYNTHESIZER

meog

MAVIS | MONOPHONIC ANALOG SYNTHESIZER VOICE

meog

NOTES:

Play with VCA ATTACK and DECAY to move between grumbles, clicks, and lasers.

Play with Mavis CUTOFF for deeper gurgles.

Double Vision

MOTHER-32 | SEMI-MODULAR ANALOG SYNTHESIZER

MAVIS | MONOPHONIC ANALOG SYNTHESIZER VOICE

NOTES:

Set Mother-32 **ASSIGN OUT** to Sequencer Step Triangle (7).

Observe how both Mother-32 and Mavis filters move independently, and raise **ONE LVL** to have Mother-32

ASSIGN change wavefolder bias.

Quad Monosynth

MOTHER-32 | SEMI-MODULAR ANALOG SYNTHESIZER

MAVIS | MONOPHONIC ANALOG SYNTHESIZER VOICE

NOTES:

Tune Mavis OSC and LFO with Mother-32 VCO.

Play with Mavis ONE LVL knob and Mother-32 VC MIX and MIX knobs to balance all four oscillators together.

Explore detuning them slightly.

Real 3D Bass

MOTHER-32 | SEMI-MODULAR ANALOG SYNTHESIZER

MAVIS | MONOPHONIC ANALOG SYNTHESIZER VOICE

NOTES:

Tune Mother-32 and Mavis VCOs together. Set Mother-32's ASSIGN OUT to Sequencer Clock (default).

Pan Mother-32 and Mavis left and right for stereo sound!